



## SUPPLEMENTAL CAMPUS SUPPORT

\$61 million investment is needed to protect against reductions in faculty, student support services, efforts to boost enrollment, mental health services, and more.

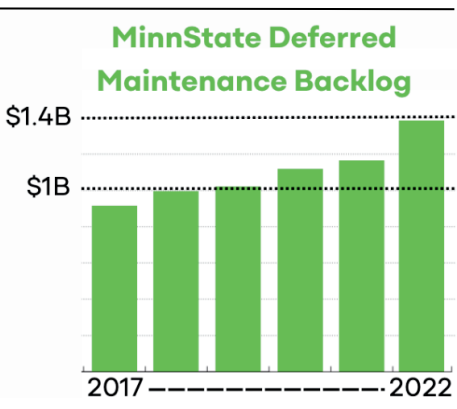
**Without investment, cuts will hurt students.**

FY24-25 Estimate of Biennial Operating Costs Increases	
Adjusted Estimate of Biennial Operating Costs	\$264M
Campus Funding Increases	\$203M
Cuts/Supplemental budget request	<b>\$61M</b>

## ADDITIONAL INVESTMENTS

- State support for NextGen project.\*
- Institutions reimbursed full costs of PSEO/Concurrent Enrollment.
- Campus safety.\*
- Teachers of Color Act.\*
- State employee pilot program for tuition-free program at a MinnState institution.\*

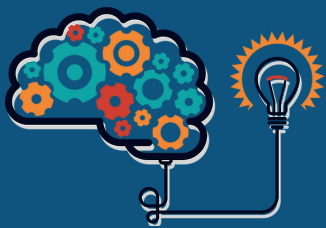
## CAMPUS INFRASTRUCTURE



- There is more than a \$1.4B backlog of maintenance (HEAPR) projects for state-owned academic buildings.
- We support the MinnState Capital Investment Request.

## LABOR RIGHTS

- Expand state health insurance eligibility for adjunct faculty.
- Protections for pay discrepancy.
- Expand health coverage for cancer patients.
- Modernize state employee travel processes.
- Improve TRA benefits



## PROTECTING ACADEMIC FREEDOM

- Academic Freedom Protection Act:
  - Develop clear regulations for Artificial Intelligence (AI).
  - Empowering faculty to truthfully educate students, so they may critically identify and analyze all forms of discrimination.
- Develop comprehensive regulations for Online Program Managers.

## EQUITY AND CAMPUS SAFETY

- Legislative policies that respect the inherent worth and dignity of all students - based on justice, equity, and inclusiveness.
- Repeal the Anti-Boycott, Divest, and Sanctions (BDS) statute.
- Allow campuses to enact the reasonable request process which restricts visitors from carrying firearms.
- Require MinnState campuses to develop Campus Accessibility Plans.
- Amend North Star Promise institutional scholarship restrictions.



Representing faculty, coaches, and counselors at the seven MinnState universities.

Legislative Contact: Jonathan Bohn | bohn@iforg.org | 651-815-1196